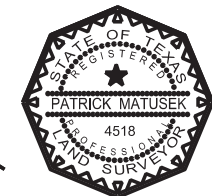
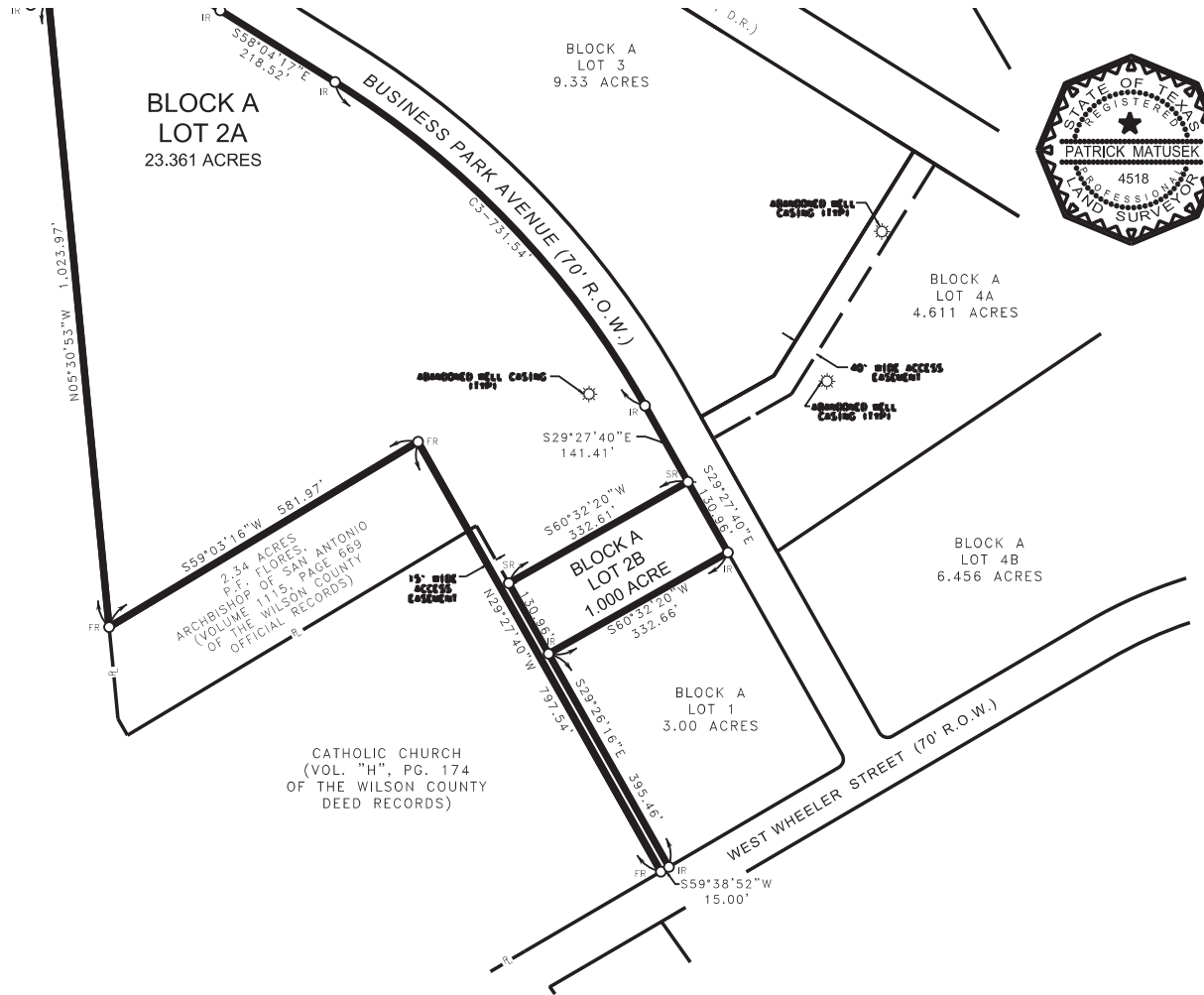
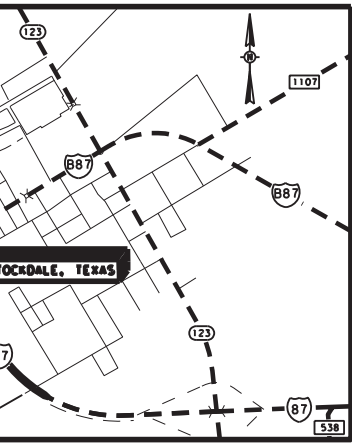


LC	L
66°53'24"E 644.18'	646.73'
31°55'43"W 150.00'	235.62'
43°45'58"E 723.96'	731.54'

KEITH JOHANSON  
(VOLUME 1518, PAGE 685  
OF THE WILSON COUNTY  
OFFICIAL RECORDS)



I HEREBY CERTIFY THAT THIS PLAT WAS MADE FROM AN ON THE GROUND SURVEY, MADE UNDER MY PERSONAL SUPERVISION ON THE 31TH DAY OF JULY, 2013 AND I AM A LICENSED PROFESSIONAL LAND SURVEYOR TO THE BEST OF MY KNOWLEDGE AND BELIEF.

*Patrick Matussek*

PATRICK C. MATUSEK, R.P.L.S. NO. 4518,  
318 E. MORRIS ST., YOAKUM, TEXAS 77995  
(361) 293-2725

SWORN TO AND SUBSCRIBED BEFORE ME  
\_\_\_\_\_ DAY OF \_\_\_\_\_, 2013.

NOTARY PUBLIC

I, \_\_\_\_\_, COUNTY CLERK OF WILSON COUNTY, TEXAS, DO HEREBY CERTIFY THAT THIS PLAT WAS FILED FOR RECORD IN MY OFFICE ON \_\_\_\_\_ DAY OF \_\_\_\_\_, 2013, AT \_\_\_\_\_ O'CLOCK \_\_\_\_\_ M AND DULY RECORDED IN VOLUME \_\_\_\_\_, PAGE \_\_\_\_\_, PLAT \_\_\_\_\_ OF THE \_\_\_\_\_ SECTION, \_\_\_\_\_ TOWNSHIP, WILSON COUNTY, TEXAS.

A TESTIMONY WHEREOF, WITNESS MY HAND AND OFFICIAL SEAL OF OFFICE THIS \_\_\_\_\_ DAY OF \_\_\_\_\_, 2013.

\_\_\_\_\_  
COUNTY CLERK, WILSON COUNTY, TEXAS

THE OWNER(S) OF THE LAND SHOWN ON THIS PLAT AND WHOSE NAME IS SUBSCRIBED HEREON AND IN PERSON ACKNOWLEDGED THAT THIS PLAT WAS MADE FROM AN ON THE GROUND SURVEY AND DEDICATES TO THE PUBLIC ALL STREETS, ALLEYS, DRAINS, EASEMENTS, AND PUBLIC